

2024 - 2027

INVEST IN MINGENEW

COMMUNITY BENEFIT SHARING OPPORTUNITIES

SHIRE
OF MINGENEW



SHIRE VISION

Mingenew is a safe, inclusive and connected community with a thriving local economy that provides opportunity for all to succeed.

OUR PURPOSE

We are leaders in delivering services and development opportunities. We balance financial sustainability and community aspirations in partnership with our local community, partners and investors.

WHAT WE VALUE

Mingenew is forward thinking, is innovative and leads change for our community, people and industry. We are passionate about our Shire and strive to create opportunities for people to belong and share this special place. We focus on building and strengthening our relationships with each other and our region as our connections enable us to build and care for our community. We support each other to “have a go” and to use our initiative and drive to create new opportunities for our community and other people. We welcome all people of all generations to Mingenev and share our community so that people can belong and feel included and valued.



Table of Contents





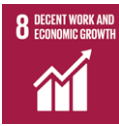










Our Aspirations	4
Strategic Objectives	5
A Message from the Shire President	6
Shire Profile	7
Shire Projects	8
Housing Crisis – Key Worker Accommodation	9
Mingenew Spring – Regional Botanical Garden	10
Upgrade of Rec Centre to Emergency Hub	11
Town Hall Restoration	12
Mingenew Heavy Vehicle Bypass	13
Mobile Dental Van Service Continuity	14
Mingenew Cenotaph Upgrade	15
Mingenew Hill Lookout & Trail	16
Mingenew Town Beautification	17
Water Park & Sealed Pump Track at Cecil Newton Park	18
Tennis Club Light Upgrade	19
Irrigation System Improvements Upgrade	20
Other Ways to Invest in Mingeneu	21



Our Aspirations

There are four strategic pillars to our Strategic Integrated Plan – grow, love, protect, and lead. For each pillar there is an aspiration and desired outcomes.

Within each pillar there are details of what we will focus on (strategic priorities), aside from our ‘business as usual’ approach and desire for continuous improvement. We will report against the strategic priorities.

				
STRATEGIC PILLAR	GROW	LOVE	PROTECT	LEAD
ASPIRATION	<i>Develop key enabling and underpinning investments to grow the resident population</i>	<i>A place where people are welcomed, can live a healthy life, and where people can reach their potential</i>	<i>Healthy natural environment with sustainable use of resources</i>	<i>Responsible, accountable and transparent leadership to deliver our priorities</i>
10 YEAR OUTCOMES	<ol style="list-style-type: none"> 1. Safe, efficient, and connected transport network 2. Growth of the local economy and resident population 3. Reliable and high speed mobile and internet access across the Shire 4. Visitors have a positive experience and extend their length of stay 5. Locals can participate in the workforce 	<ol style="list-style-type: none"> 1. Strong sense of community and culture 2. Increased resident and visitor participation in our events 3. A healthy and active community with access to local health and recreation services and facilities 	<ol style="list-style-type: none"> 1. Valued and protected natural environment 2. Reduced impact of natural events and pests on businesses and the community 3. Sustainable Council practices 	<ol style="list-style-type: none"> 1. Community feel they are heard and can understand Council decision making 2. Continued high standard of governance 3. Our strategic priorities are achieved through cooperation and collaboration 4. Skilled and capable Council and resident workforce
UNITED NATIONS SUSTAINABLE DEVELOPMENT	Place Prosperity   	People Place  	Planet    	Performance  

Strategic Objectives

There are four strategic pillars to our Strategic Integrated Plan – grow, love, protect, and lead. For each pillar there is an aspiration and desired outcomes.



GROW MINGENEW (ECONOMIC)

- Local road construction and maintenance
- Footpath construction, expansion and maintenance
- Tourism and worker accommodation
- Shire accommodation expansion
- Advocate for improved telecommunications
- Economic development and jobs
- Town centre beautification



LOVE MINGENEW (COMMUNITY)

- Recreation Centre development
- Public space development e.g. gardens, main street
- Support childcare facilities
- Develop full day care
- Sport and recreation facility development
- Facilitate access to local health and medical services
- Support for local clubs and volunteers
- Local events
- Community wellbeing and health for all age groups



PROTECT MINGENEW (ENVIRONMENT)

- Waste management
- Mingenew Spring development
- Mingenew Hill access improvements



LEAD MINGENEW (CIVIC LEADERSHIP)

- Strong and transparent leadership
- High standard of customer service
- Attractive workplace
- Meet our compliance requirements
- Financial sustainability

Message from the Shire President

This is an invitation to invest in Mingenew with the opportunity to become an influential force in driving sustainable development and economic growth, while having a proactive and positive presence in our community.

We encourage all new businesses in our community to be dedicated to contributing to our community vision and to align their business principles and objectives with being responsible corporate citizens.

We've developed the Community Benefit Sharing Prospectus to showcase the Shire's commitment to realizing our community's vision: "Mingenew is a safe, inclusive, and connected community with a thriving local economy that provides opportunities for all to succeed." This document identifies key projects that focus on addressing priority areas:

- Improving community infrastructure and amenities
- Supporting local living and suitable housing
- Creating and promoting local training opportunities and employment pathways
- Promoting local purchasing
- Fostering strong local partnerships

The Priority Projects outlined in this prospectus are carefully selected to leverage our unique strengths and opportunities. From infrastructure improvements and community facilities to environmental sustainability initiatives and economic development programs, each

project is designed to deliver tangible benefits. We believe these projects will not only improve the quality of life for our residents but also attract new businesses and visitors to our Shire, further stimulating local economic activity.

Mingenew offers an excellent quality of life with a friendly, safe and close-knit community, beautiful natural surroundings, and top-notch local services. Supported by a strong agricultural industry, our residents enjoy an active and inclusive sports and recreation club culture, a well-resourced primary school, expanding childcare facilities, and superior internet connectivity for working remotely. Located just an hour from a major servicing centre and only 35 minutes from the beach, Mingenew is a safe and welcoming place where employees and their families will be happier, healthier, and experience a sense of belonging, making them more productive and improving job retention.

We are committed to actively engaging with you to ensure that your investment means a positive future for Mingenew residents and mutually beneficial growth for your business. By investing in our Priority Projects, you are contributing to a brighter future for Mingenew. We invite you to join us on this journey and become a vital part of Mingenew's continued success.

Gary Cosgrove

Shire President



Shire of Mingenew Profile

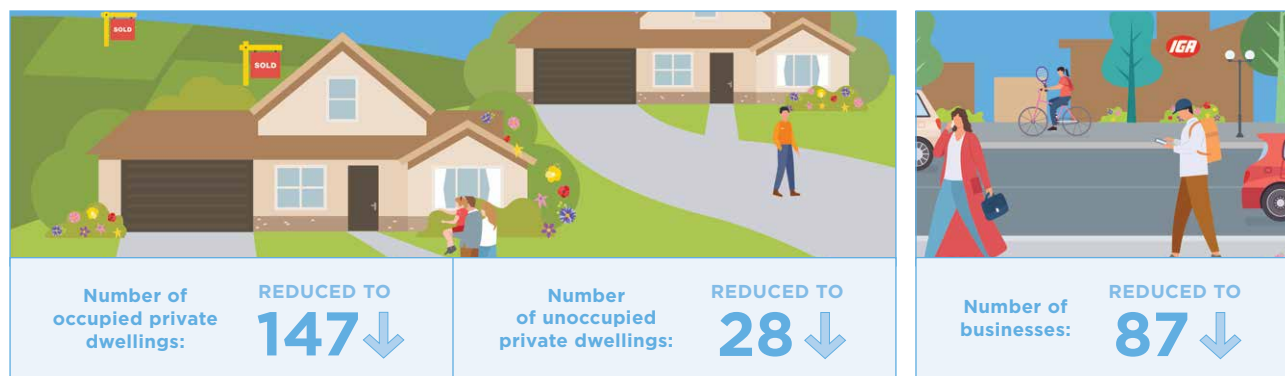
ECONOMY



Source: REMPLAN Mid West Profile



OVER A 10YR PERIOD

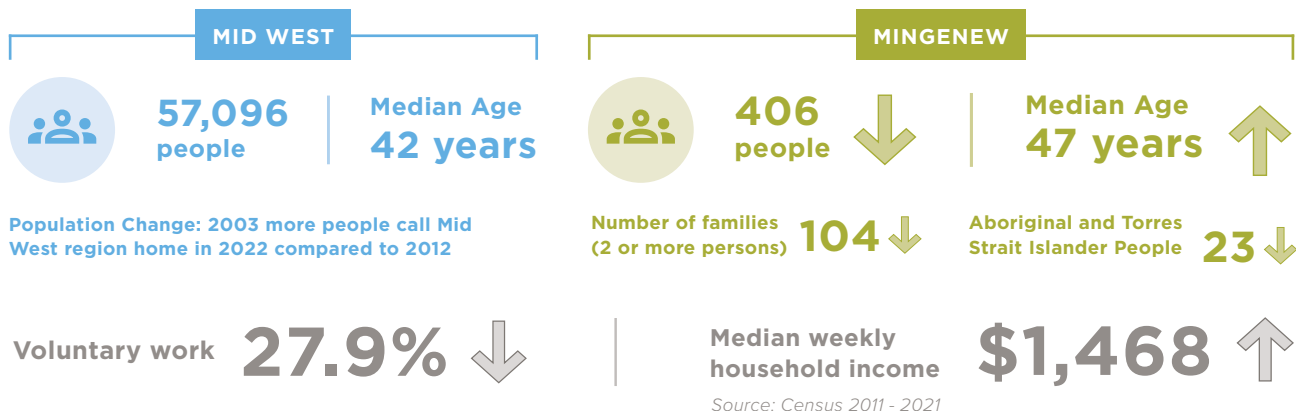


Source: Census, 2021

ABS, Number of Businesses 2021

Mingenew has essentially three basic ingredients. Economically, we are an agricultural powerhouse and the southern hemisphere's largest grain facilitator. Aesthetically we are surrounded by breathtaking breakaway country, with fantastic flat-top ridges and, during WA's wildflower season, we are arguably its most sought-after destination. Finally, we are vibrant and happy! Below our rural and 'real country' persona, we enjoy a sporting and social calendar that is second to none. Many people who pass through for work or play end up staying and because we are a successful agricultural Shire, there are many supporting industries, facilities and employment opportunities.

POPULATION



SHIRE PROJECTS

On the following pages, you can learn more about several of the Shire's key projects for 2024-2027. We welcome you to invest in our community.



Housing Crisis – Key Worker Accommodation



The Shire of Mingenew has a zero rental vacancy rate. A vacancy rate of 3% is generally considered a sustainable rate. The housing crisis is seeing vacancy rates well below average with no properties to rent. Lack of housing stock and an aged housing stock is putting pressure on local businesses across a broad range of industries to recruit and retain staff. Key services such as teachers, nurses, and childcare services are at risk of failure due to the lack of available suitable housing. There is also little to no available accommodation for work crews which frequent the region.

Western Power and Water Corporation have for reasons unknown failed to services many original residential town blocks which has significantly impacted development due to significant costs to connect water and power utilities.

In addition, the community has a need for additional aged person units to assist our aging population move into more suitable accommodation.

OBJECTIVE

The establishment of key worker accommodation and additional aged person accommodation within the town of Mingenew.

WHAT WE WILL DELIVER

Key Worker

Council is looking to acquire additional land to facilitate the establishment of a key worker village to be utilised by the resource sector. Council is also looking to build additional key worker dwellings.

Social Housing – Aged Persons

Council is looking to establish an aged persons community complex including 10 units of silver accessibility standard.

Infrastructure Servicing of Land

Council is looking to close the gap and service all existing residential block within the Town surrounds to assist in facilitating development.

WHAT DO WE NEED

The Shire has insufficient capacity to fully self-fund the project through existing revenue sources e.g. rate revenue, fees & charges etc. and would not otherwise be able to deliver on this project without external sources.

	KEY WORKER ACCOMODATION	AGED PERSON UNITS	SERVICING OF BLOCKS	LIFESTYLE BLOCK
Requested Funds	\$5M	\$3M	\$1M	\$3M
Other Funds	NA	NA	NA	NA
Council Funds	\$1.4M	Nil	Nil	Nil
Estimated Cost	\$6.4M	\$3M	\$1M	\$3M

PROJECT TIMELINE

Urgent

Mingenew Spring – Regional Botanical Garden



The Mingenew Spring Regional Botanic Garden will drive industry growth and diversification by stabilising and increasing tourist traffic moving away from a single source industry such as wild flowers, which directly benefits local tourism and hospitality businesses. This year-round attraction will stimulate new business in the area and expand existing ones in related sectors like accommodation, restaurants/pubs and retail stores. The garden will also support the horticulture industry through increased demand for gardening materials and by offering training and employment opportunities. The project will also enhance liveability by providing a beautiful green space for recreation and community gatherings, improving the quality of life for existing residents as well as attracting new ones. It will serve as an educational resource, promoting environmental awareness and collaboration with schools and research institutions. The project will mitigate the impacts of seasonal tourism and predicted droughts, ensuring a steady flow of visitors and economic activity. The site has nesting rare black Cockatoos and a micro-bat colony which facilitates a school education and study program.

OBJECTIVE

The proposed Regional Botanic Garden will unlock future investment in the region. This can be evidenced by the Gargarro Botanical Garden in the small Victorian country town of Gougory with its 200 residents. In their first year since completing their Regional Botanical Garden they have experienced significant visitations and economic benefit with some 35,000 visitations in the first 12 months of operation. - a video flythrough is provided at the following link: <https://vimeo.com/856692941>

WHAT WE WILL DELIVER

The increased tourist traffic will boost demand for local hospitality services, including hotels, restaurants, and retail shops. Additionally, the garden's need for ongoing maintenance and development will create opportunities for local suppliers and contractors, stimulating growth in related sectors. The Shire of Mingenew have recently employed an apprentice in Parks and Gardens, and we hope to offer additional employment opportunities in the future. The economic activity generated by these businesses will create a positive feedback loop, encouraging further investment in the region. Kings Park and Botanic Garden is Perth's most visited tourist attraction. We believe Mingenew Spring and Botanic Garden will become one of the Mid West's most visited destinations similar to Gargarro.

WHAT DO WE NEED

The Shire has insufficient capacity to fully self-fund the project through existing revenue sources e.g. rate revenue, fees & charges etc. and would not otherwise be able to deliver on this project without external sources.

PROJECT TIMELINE

Stage 1 – 2024/25

Establishment of hard infrastructure including bridges creek, Lake

Stage 2 – 2025/26

Establishment of Plant Collections, Gardens, passive recreational areas

REQUEST

\$1.5M

Community Benefit Sharing Opportunities

Upgrade of Rec Centre to Emergency Hub



In 2021, following Cyclone Seroja, the Shire of Mingenew sustained significant damage, leaving 100 confirmed properties damaged, and 28 residents displaced. Mingenew does not have any cyclone rated infrastructure that is appropriate to house residents, visitors, emergency personnel and volunteers nor a centralised location for emergency response and disaster recovery support services to coordinate activities from. As a result, a large portion of emergency personnel deployed to Mingenew were travelling a minimum of 234kms to assist with recovery. This project aims to provide suitable temporary accommodation and support services to affected person/s during an emergency.

OBJECTIVE

To upgrade the existing Recreation Centre to be used as an emergency hub in the event of natural disasters, such as Tropical Cyclone Seroja which caused major damage to our community. The Shire plans to extend the floor area, installing an all abilities toilet upstairs, structurally sound windows and doors, sourcing potable water supply and provision of a 50KVA generator and STAND Communications

WHAT WE WILL DELIVER

The Recreation Centre upgrade will extend the current hall room floor space, adding an additional space of 300m², creating a 80-bed functionality, an internal accessible toilet block (the current facility does not have internal access to toilets), adequate heating/ cooling to the extension, partitions added to the shower blocks on the lower floor, northern and western windows to be upgraded to the appropriate wind rating and moved out to the veranda edge, closing in the veranda space, a 50KVA generator to ensure the facility can have a standalone power source, and plumbed access to potable water and STAND Communications system.

WHAT DO WE NEED

The Shire has insufficient capacity to fully self-fund the project through existing revenue sources e.g. rate revenue, fees & charges etc. and would not otherwise be able to deliver on this project without external support.

REQUEST

\$1.5M

PROJECT TIMELINE

2025-2027

Upgrade of Town Hall



The Mingenew Town Hall was built in 1959 and has served the Mingenew community for many years. In about 2012 asbestos was identified in the Hall and along with other deficiencies a decision was made to close the Hall.

OBJECTIVE

The Hall to be reopened would need significant restoration and building repairs.

In summary these include:

Asbestos removal, Site drainage and paving, Stabilisation and repair of steel columns, Brick walls repair and replacement, New external claddings, wall insulation and internal linings, build backstage walls, New, stronger ceiling and ceiling insulation, Window repairs, reinforcement and re-glazing, New door escape bars and hardware and exit signage, Replacement of southern sliding doors and wall panels, Floor care and refinishing, New services – basic level

Additional, functionality options recommended include:

Chair and equipment storage, Kitchen and bar installation, PWD access to the stage, New PWD compliant toilet, Audio visual equipment installations, Automated windows for high level hot air ventilation , Include additional openable windows to catch breezes, Acoustic treatments, New awnings / sunshading, New entry / streetscape treatment, New roofed courtyard break-out space

These additional works have the potential to create a better patronised, regionally significant venue and architectural attraction, and to maximise the functionality of this community asset.

WHAT WE WILL DELIVER

A restored facility available for the community to once again enjoy after being closed for over 12 years.

WHAT DO WE NEED

The Shire has insufficient capacity to fully self-fund the project through existing revenue sources e.g. rate revenue, fees & charges etc. and would not otherwise be able to deliver on this project without external support.

REQUEST

\$2M

PROJECT TIMELINE

2025-2027

Mingenew Heavy Vehicle Bypass



Since March 2019, the Shire of Mingenerew approached Main Roads WA (MRWA) with several traffic and transport issues regarding congestion, and train/heavy vehicle interaction problems in the townsite of Mingenerew. The main generator of the heavy vehicles or road trains is the Cooperative Bulk Handling (CBH) facility, consequently, these heavy vehicles pass through the Mingenerew town centre, especially during the CBH harvest seasons. In addition, RAV 7 vehicle movements are all year round including grain haulage and iron ore haulage of 1.4 MT/annum

OBJECTIVE

Construct a heavy vehicle route and is a designated road that is designed to divert and guide heavy vehicles from the Mingenerew Town centre and prevent congestion and increase safety for the road users.

WHAT WE WILL DELIVER

Intersection upgrades including modifications, which will aim to improving the functionality, safety, and efficiency of the Mingenerew-Morawa intersection. The construction of a heavy vehicle route from Midlands Road through to Eleanor and the additional provision of a heavy vehicle parking bay and pedestrian access from this parking bay into the main street.

WHAT DO WE NEED

The Shire has insufficient capacity to fully self-fund the project through existing revenue sources e.g. rate revenue, fees & charges etc. and would not otherwise be able to deliver on this project without external support.

REQUEST

\$6M

PROJECT TIMELINE

2027-2029

Mobile Dental Van Service Continuity



Since 2012, the communities of Mingenew, Morawa and Perenjori have benefited from free dental health services, made possible through the Royal Flying Doctor’s purpose-built mobile dental van, and partnership with Karara Mining Ltd. The van has not been operational since 2022 due to requiring significant repairs to the treatment chair and electrical system of the van.

OBJECTIVE

We’d like to identify new potential partnerships to ensure the continuity of this essential service to our communities.

WHAT WE WILL DELIVER

Dental conditions are one of the leading factors for preventable hospitalisations in the Midwest so local access to dental services is essential to maintaining the health and well-being of our residents and preventing the loss of local residents to further, more serious health care.

This project will deliver an operational van and service to the Midwest.

WHAT DO WE NEED

A partner to fund the repairs and get the van back on the road.

REQUEST	PROJECT TIMELINE
\$90,000	2024-2025

Mingenew Cenotaph Upgrade



The Shire is looking to upgrade its War Memorial to improve this essential respectful place. The upgrade will create a room effect with lone pines on its boundaries, and additional 4th flagpole for the Aboriginal flag to be flown at ceremonies, a new plinth to honor and place plaques currently located on different buildings and a soft lawn area to surround the cenotaph and replace the existing aggregate.

OBJECTIVE

We are planning on building a low memorial wall along the back of the area with the names of the 163 people from Mingenew who went to WW1. We then plan to erect four new flagpoles to allow for the Australian, New Zealand, West Australian, and Indigenous flags to be flown. We will landscape the area with a lawn, four conifer trees, and a low rosemary hedge behind the memorial wall. We will construct a new footpath and carpark and install electrical outlets behind the wall for speakers and microphones. On Anzac day each year we hold a dawn service followed by a Gunfire breakfast for which the majority of the 425 population attend. Most years the TS Morrow Navel Cadets from Geraldton take part in the service. The Shire would also like to use the memorial for Remembrance day and other commemorative occasions.

WHAT WE WILL DELIVER

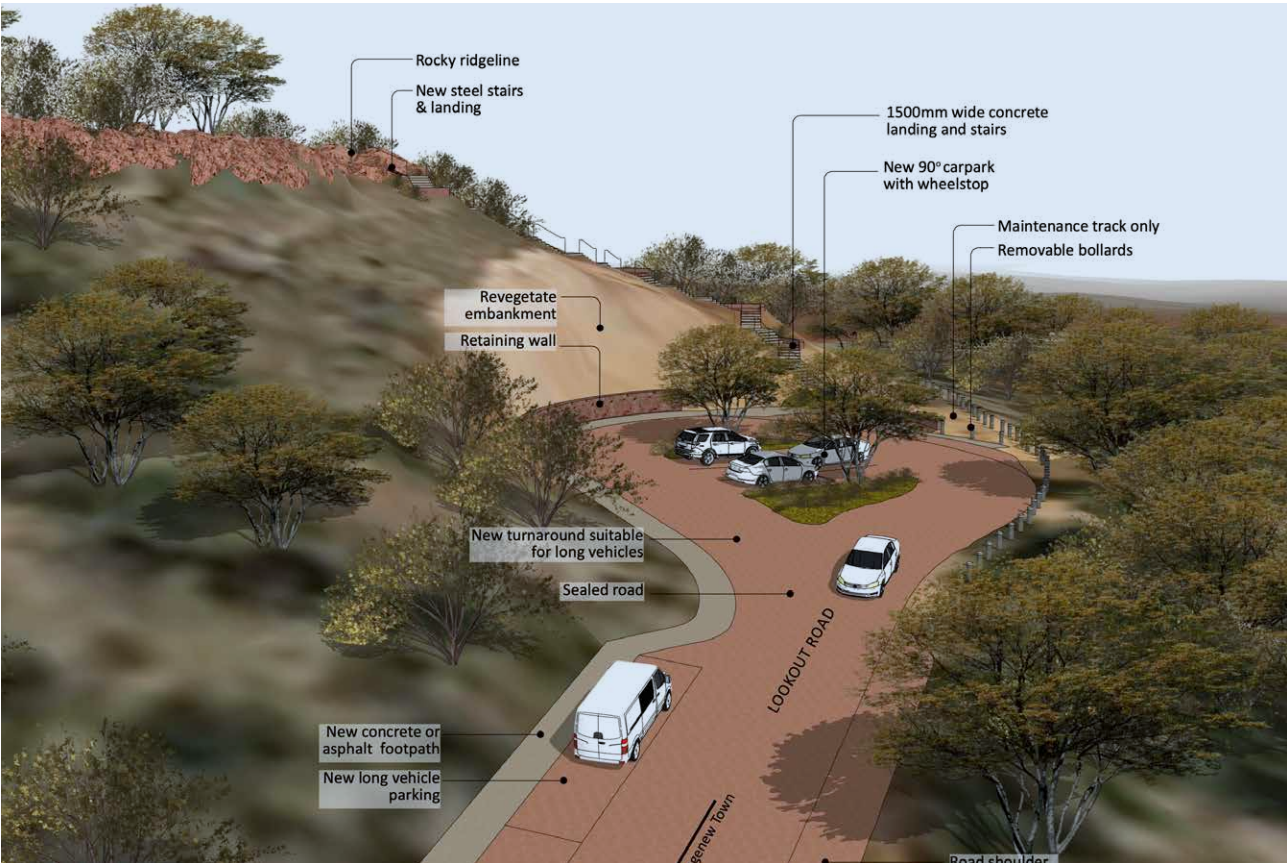
The proposed design for the Mingenew Cenotaph features a low, solemn memorial wall as the focal point, paying tribute to our heroes. An avenue of trees will be planted to create a serene pathway leading to the memorial, offering a place for reflection. Tall flagpoles will proudly display the national colours. A new defined carpark will improve accessibility and provide a space for commemorations. This design intends to honour our veterans with dignity and create a respectful space for remembrance in Mingenew.

WHAT DO WE NEED

The Shire has insufficient capacity to fully self-fund the project through existing revenue sources e.g. rate revenue, fees & charges etc. and would not otherwise be able to deliver on this project without external support.

REQUEST	PROJECT TIMELINE
\$50,000	2024-2025

Mingenew Hill Lookout & Trail



This project is to activate the Mingenew Hill Precinct. And showcase the rich cultural heritage of the Littlewell people who lived on this land. The project includes an access stairway to deliver you to the top of Mingenew Hill to enjoy the surrounding landscape and read about its rich heritage. The project includes parking and road upgrade to enable tourists in caravans to visit this very important site.

OBJECTIVE

To activate the Mingenew Hill Precinct and provide for a higher level of accessibility to the area.

WHAT WE WILL DELIVER

The proposed Mingenew Lookout design promises enhanced accessibility and scenic enjoyment. A sealed lookout road, complete with removable bollards, ensures easy access. A new concrete or asphalt footpath leads to the lookout, featuring concrete stairs with handrails, stone landings, and seatwalls for comfort. The formalized track includes signage, offering a guided experience. A new car park, equipped with wheel stops and surrounding planting areas, accommodates both regular and long vehicles. A dedicated turn-around for long vehicles and a setdown space add convenience to this picturesque vantage point.

WHAT DO WE NEED

The Shire has insufficient capacity to fully self-fund the project through existing revenue sources e.g. rate revenue, fees & charges etc. and would not otherwise be able to deliver on this project without external support.

REQUEST	PROJECT TIMELINE
\$1M	2025-2026

Mingenew Town Beautification



The Council has developed a masterplan for the beautification of the Victoria Street Precinct. This Precinct masterplan delivers improvements to the Shire Chambers frontage with the incorporation of gardens and three flag poles to include the Aboriginal State and Australian flags. It provides for an avenue of trees on both sides of Victoria Street creating a cool summer and warm winter environment. The precinct will showcase the historic chambers and provide linkages to the original Roads Board and Mingenew Museum and display a silhouette horse tied to the original hitching rail still in existence outside of the Roads Board which was built in 1904. It will also be the entry point for the new Mingenew Daycare Facility.

OBJECTIVE

To beautify Mingenew and provide cooling shade in summer.

WHAT WE WILL DELIVER

The proposed Mingenew Streetscape project envisions a vibrant urban and main street transformation. Lined with lush street trees, the main street will provide shade and enhance aesthetics. Raised crossings will improve pedestrian safety, making it easier to navigate the town. Additionally, thoughtfully designed garden beds will add a burst of color, creating a sense of community pride. This revitalized streetscape strives to create a more inviting and pedestrian-friendly environment, fostering a thriving urban landscape form.

WHAT DO WE NEED

The Shire has insufficient capacity to fully self-fund the project through existing revenue sources e.g. rate revenue, fees & charges etc. and would not otherwise be able to deliver on this project without external support.

REQUEST

\$200,000

PROJECT TIMELINE

2025-2026

Water Park & Sealed Pump Track At Cecil Newton Park



The Council is looking to develop a modest Water Play Park and sealed pump Track in the Cecil Newton Park Precinct redevelopment. This would be the final feature to be incorporated into this great community facility which already has play, basketball, pump track, skate park and BBQ facilities.

OBJECTIVE

To add to the liveability of Mingenew through the provision of enhanced recreational facilities..

WHAT WE WILL DELIVER

The proposed Mingenew Splash Play is an exciting addition for all ages. Featuring a splashpad with sandstone block edging for aesthetics and safety. The design incorporates engaging elements like a waterleaf, leaf, and sproat soakers, as well as a gecko and ant soakers, ensuring a refreshing and enjoyable water play experience for the entire community.

The existing pump track needs to be sealed to be all weather and suitable for all ages.

WHAT DO WE NEED

The Shire has insufficient capacity to fully self-fund the project through existing revenue sources e.g. rate revenue, fees & charges etc. and would not otherwise be able to deliver on this project without external support.

REQUEST
\$400,000

PROJECT TIMELINE
2024-2026

Tennis Club Light Upgrade



To support the newly constructed Clubhouse, and the ever increasing popularity of tennis in Mingenew, the Club requires the replacement of its light towers.

OBJECTIVE

To support the Tennis Club in growing their membership and participation in tennis, as Mingenew’s premier sport and recreational activity during summer. As a key 10 year outcome identified in the Shire’s Strategic Community Plan 2023-2033, this will help to deliver on the community’s strong sense of community and culture.

WHAT WE WILL DELIVER

Adequate lighting is essential to the success of the Tennis Club as a large portion of its events and activities are held under lights. This project would see the replacement of four light towers on the main grass greens that are constructed at the necessary standard to support recreational and regional competitions, as well as creating efficiencies in power consumption and maintenance requirements.

WHAT DO WE NEED

The Club and Shire have recently contributed significant funds to replacing the current Tennis Clubhouse, as has the State Government through grant funding. Should further grant funding not be possible, the project will not be able to proceed.

REQUEST
\$100,000

PROJECT TIMELINE
2024-2025

Irrigation System Improvement Upgrade



The Shire would like to see investment in smarter, innovative and more efficient irrigation systems that ensure we can conserve and protect our natural water resources to support the high standard of sporting facilities and public open spaces.

OBJECTIVE

As identified in the Shire’s Strategic Community Plan 2023-2033, the Shire is committed to developing locally appropriate mitigation and adaption strategies to manage climate change, and adopting a sustainable use of resources mindset.

WHAT WE WILL DELIVER

We aim to deliver a system that efficiently captures and harvests rainwater to feed into key community infrastructure, including sporting grounds, recreational facilities, staff housing and public open spaces.

The project would see the purchase of a large water tank and new and smarter irrigation systems to these facilities, reducing manual labour and the requirement to access local water stocks, and contributing to a more environmentally friendly and efficient system

WHAT DO WE NEED

Contributions toward infrastructure designs and upgrades of irrigation systems and water storage.

REQUEST
\$100,000

PROJECT TIMELINE
2025-2026

Other ways to invest in Mingenew



CREATING JOBS FOR LOCALS

The Shire has a vision to “grow its own” talent and skills within the community and encourages opportunities to:

- Promote and provide local employment opportunities
- Foster partnerships that encourage living and working locally
- Offer traineeships and apprenticeships to create career pathways for youth
- Deliver local training and development programs to enhance skills

SUPPORTING LOCAL SUPPLIERS AND PURCHASING

We want Mingenew to thrive as a community. By doing business in Mingenew, you support local families, entrepreneurs, and groups, contributing to the growth of our economy. Here are some ways you can get involved and support local:

- Accommodation providers
- Food producers and retailers
- Transport and logistics
- Healthcare initiatives and services
- Trades and services

Additionally, you can establish local purchasing policies and partner with local groups, such as the Mingenew-Irwin Group and the local business alliance (through the Mingenew CRC).

PROMOTING RESPONSIBLE DEVELOPMENT

Looking to develop in the Shire of Mingenew? We encourage you to speak with us in the early stages of your project to:

- Facilitate the planning process through a guided pre-application meeting with the Planning Department (subject to required planning approval).
- Provide proponents with a custom list of local suppliers in the region.
- Facilitate relevant connections between the proponent and key government agencies.

Advise of available government grants and incentive programs.

COMMUNITY COLLABORATIONS

Whilst we have a strong agricultural history and future, Mingenew has built a fantastic brand through successful tourism campaigns and our rich sporting and community culture. Community-mindedness is essential to our success, and there are numerous ways for businesses and individuals to get involved in Mingenew’s events:

- Wildflower season
- Stargazing
- Mingenew Midwest Expo
- Mingenew Races
- Winter Sports



Other ways to invest in Mingenew Cont.

SPACES TO DO BUSINESS

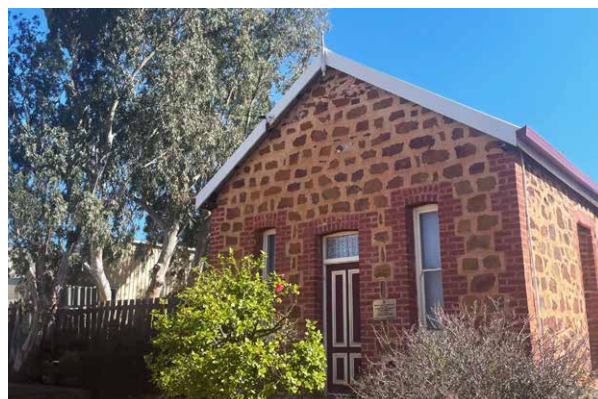


Recreation Centre and Function Room

With the capacity to hold up to 150 people and with the best views in the Midwest from the balcony, the Mingenew Recreation Centre is the ideal location to host large functions and events. The Rec Centre has a full commercial kitchen available, large coolroom and cutlery and crockery. Toilets and changerooms are available.

Mingenew Turf Bar

Whilst this building facilitates two of our premier events, the Mingenew Midwest Expo and Mingenew Races, this facility features a bar, all accessible toilets, and surrounding open space which can be hired out for a range of events.



Co-working Space

Needing an office space to meet with clients or carry out work in a quiet, work-conducive environment then the Co-working space may be ideal.

The Shire also has a range of facilities that may cater to your business or social needs, discuss these and other options with our friendly staff at the Shire.

Mingenew Tennis Club

Check out the brand new Tennis Club building that features a small kitchen, all accessible toilets and meeting space for more intimate events.

FUNDING OPPORTUNITIES FOR BUSINESS

Connect with our team to discover funding opportunities that can support your ideas and help your business, whether you're just starting out or looking to grow. Here are some resources to get you started:

MWDC REDS grants

<https://www.mwdc.wa.gov.au/business-and-industry-support/red-grants.aspx>

Shire Community Assistance Scheme Grants

Enquire with the Shire now.

Innovation Booster Grant

<https://www.wa.gov.au/organisation/department-of-jobs-tourism-science-and-innovation/new-industries-fund-innovation-booster-grant>

Other Resources

- <https://business.gov.au/grants-and-programs?resultsNum=10>
- <https://www.grants.gov.au/>



Shire office: 21 Victoria Road (PO Box 120), Mingenew, WA 6522
T (08) 9928 1102 **F** (08) 9928 1128 **E** enquiries@mingenew.wa.gov.au
www.mingenew.wa.gov.au